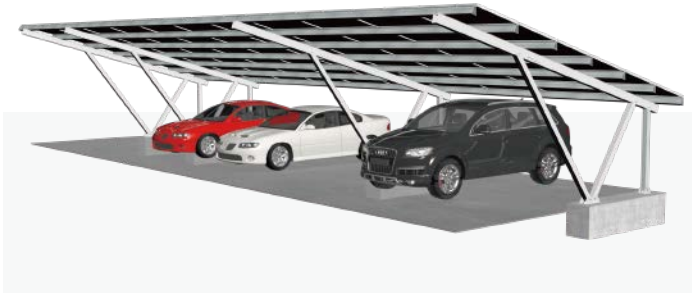


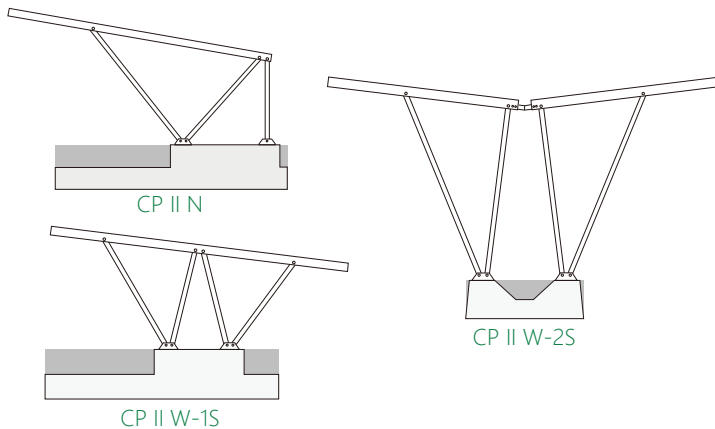
Overview



MRac Solar Carport System II is a pre-assembled ground solar mounting system which is ideal for large commercial and utility-scale solar PV projects. The system has been developed for various photovoltaic modules and will be customized to fit into the parking lot or designed according to specific requirements. The Carport System can protect the cars to avoid damage from sunshine, wind, rain water, and snow. Mibet's engineers continue to optimize the design of system, the quality of product and service, and also provide the best solution for your Solar Carport System.



Mounting Structure



Advantages

- Customized Solution
Design case by case, making a good utilization of ground resource and pursuit for easy and quick installation.
- High Waterproof
The special waterproof conforms to the structure of system, which make the performance Stronger
- Save Installation Time and Labor Cost on Site
With installation manuals and system solution, the construction on site will be simple.
Less construction time directly reduces project costs.
- Compatible to Varied Solar Modules
With Mrac module clamps, the system compatible with most kinds of framed and frame and frameless modules.

Technical Parameter

Installation Site	Open Area	Design Standard	AS/NZS 1170 , DIN 1055 , JIS C 8955 : 2017,
Foundation	Concrete foundation		International Building Code IBC 2009 ,
Tilt Angle	5-15°		California Building Code CBC 2010
Wind Load	45m/s	Material	Al6005-T5(Anodized)
Snow Load	1.2KN/m ²	Fastener	SUS304 & Zinc-Nickel Alloy Electroplated Steel
Ground Clearance	2000mm+	Small Components	Al6005-T5(Anodized)
Applicable Solar Module	Framed or Frameless	Color	Silver or Customized
Panel Layout	Portrait or Landscape	Warranty	10-Year Warranty

Certified by TUV, SGS and qualified consultants in AU, JP, ASEAN, CN, UK, EU, US



Component List



Wide End Clamp Kit	U25 Inter Clamp Kit	C Clamp Kit	Anchor Plate for Carport	Square Tube	Waterproof for Cross Beam	Conical Symmetric Cross Beam 135	Splice for Conical Symmetric Cross Beam 135	Beam 160
Wide End Clamp	U25 Inter Clamp	C Clamp	Specification: 62*49*L250 62*49*L450	L*100*100	Specification: 100*100	Specification: L*58*135	L260mm Flange Head Self-Tapping Screw ST6.3*19	L*100*100
Cross Module	Cross Module	Cross Module						
Spring Washer M8	Spring Washer M8	Spring Washer M8						
Hexagon Socket Bolt	Hexagon Socket Bolt	Hexagon Socket Bolt						